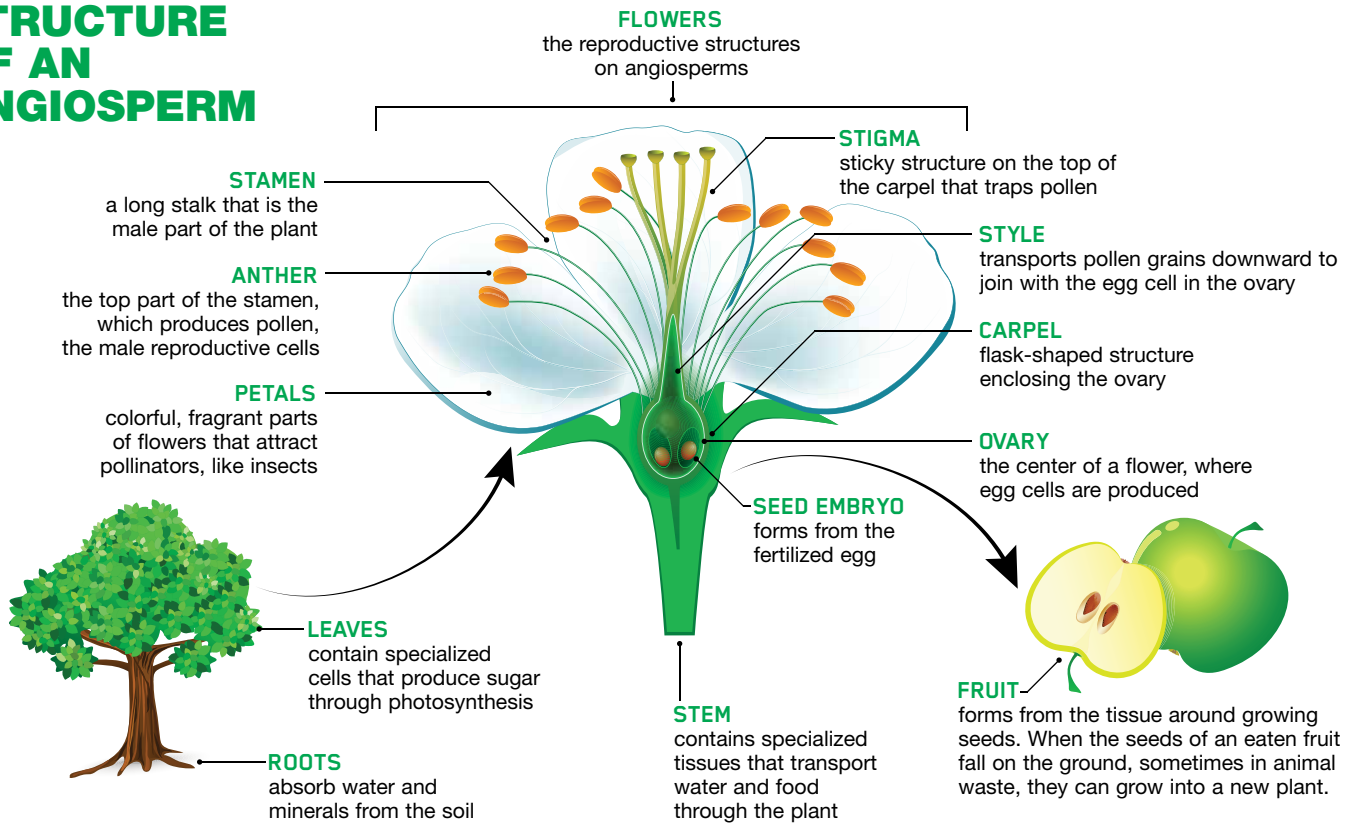


Name: \_\_\_\_\_

# LIFE OF A FLOWERING PLANT

In "Spice It Up!" (p. 14), you read about the origin of several spices used in gingerbread. Many spices come from different types of *angiosperms*, or flowering plants. The diagram below shows how these plants survive and reproduce using specialized structures. Use the information in the diagram and the article to answer the questions that follow.

## STRUCTURE OF AN ANGIOSPERM



## QUESTIONS

1. What is the function of a plant's stamen? How does the stamen's structure support that function?
2. From what part of the plant is ginger derived? What is that part's function?
3. Cinnamon comes from the bark of a flowering tree. How do you think bark helps the tree survive?
4. You read that nutmeg comes from the seed of a flowering tree. In your own words, explain how new nutmeg seeds form.
5. Choose two spices from the article that are derived from different plant structures. Describe each structure and explain how it supports the plant's survival or reproduction.